



# EL PASO PUBLIC ART TOUR

CITY OF EL PASO | MUSEUMS AND CULTURAL AFFAIRS DEPARTMENT 2017

## Cavalry Man

### Jose Ruiz de Rivera

1939

605 N. Santa Fe St. - DOWNTOWN

*Black granite / 8' tall on a 5' base*

**About the work:** Cavalry Man was carved from black granite and represents the immortalization of the U.S. Cavalryman. This stone statue is a representation of the late William Harvie, a 32nd Degree Mason member of the Scottish Rite Temple and a dear friend of Percival Henderson, the man who donated money for the sculpture to be created.



## La Plaza de Los Lagartos

### Leticia Huerta

2013

422 N. Oregon St., Bataan Crossing - DOWNTOWN

*Plasma cut steel, with powder coated paint / 6' x 48'*

**About the work:** The concept for the Oregon St. Bataan Trainway Fence was inspired by the architecture that is in close proximity to the fence as well as the history of the San Jacinto Plaza. The Kress building with its Spanish and Moorish style of architecture as well as the Mills building and other buildings surrounding the plaza were also sources of inspiration.





## Aguacero

Sebastian

2011

1000 S. Santa Fe St. - DOWNTOWN

*Fabricated steel, paint / 45' x 25'*

**About the work:** Aguacero was commissioned as a welcoming gateway for commuters traveling northbound into El Paso. Aguacero is a 45-ft tall abstract steel sculpture evoking an El Paso desert downpour. The outlines are that of storm clouds which, when they appear in the desert skies, immediately release their rain; soon afterwards with the torrent touching the ground.





# The River Chronicle: A History of El Paso del Norte

Roberto Davidoff

2014

1 Ballpark Plaza - DOWNTOWN

*Glass, steel / 10' x 60'*

**About the work:** The River Chronicle: A History of El Paso del Norte, is an artistic glass window located on the clock tower presenting a chronological representation of the diverse history of the Pass of the North. The river, expressing the Rio Grande, moves from the bottom of the tower to the top, with images moving chronologically up-ward, from the first Native Americans to the present day.





## Not-Whole Fence

### Ball-Nogues Studio

1 Ballpark Plaza - DOWNTOWN

*Aluminum / 10' x 130'*

2014

**About the work:** Not-Whole Fence is fabricated out of extruded aluminum, and gives the overall impression of knot-holes on a picket fence, which stems from an old pastime in baseball. Pedestrians are able to view into the stadium through the fence, while the fence also provides an enhanced experience to those driving by. The representation created by the designs in the fence can be seen from inside the stadium as well.



# Silver Lining

## Barbara Grygutis

2010

1 Civic Center Plaza - DOWNTOWN

*Tile, steel, stained concrete / varies*

**About the work:** Inspired by the palm trees that once lined the perimeter of the Abraham Chavez Theatre, the Silver Lining consists of 14 light sculptures, 12 arch guards lining the Convention and Visitors Bureau, and one canopy column base located as a support element for the Civic Center Plaza canopy. All 14 light sculptures were strategically designed and programmed with LED lighting to simulate a wave using a blue-green color scheme; bringing color and interaction to El Paso's Downtown Arts District.





# El Paso History of Baseball

2014

## Gaspar Enriquez

1 Ballpark Plaza - DOWNTOWN

*Porcelain enamel / varies*

**About the work:** These large murals, reproduced on porcelain enamel panels, were each hand-painted and uniquely represent historical figures, teams, and memories of baseball in El Paso. Artist Gaspar Enriquez gathered images while working closely with the El Paso Baseball Hall of Fame.



## Rio Grande 1

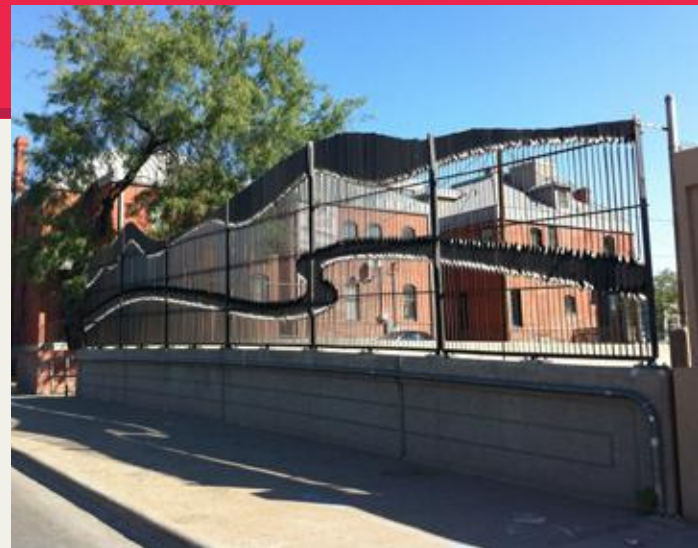
### Lars Stanley

2013

457 N. Santa Fe St., Bataan Crossing - DOWNTOWN

*Steel with paint / 6' x 48'*

**About the work:** Conceptually, the twisted forms of the artwork make reference to the ubiquitous mountains surrounding El Paso as well as the Rio Grande, the river serving as the major force giving shape to "The Pass" through the mountains. These images are expressed as silhouettes seen through the panels.



## Aztec Pavilion

### Poetic Kinetics

2012

605 N. Santa Fe St. - DOWNTOWN

*Cor-ten steel, concrete, solar panels, light condensers,  
and crystal prisms / 16' x 20'*

**About the work:** The Aztec Pavilion, a renewable energy education project, is a shaded yet light-filled gathering & performance space with an elaborate detailed ceiling, paying homage to the original Aztec calendar and casting light play onto the ground below. It features nine solar panels on the canopy, which provide power to outlets located in the structure.







## Time Expanding

Charlotte Paul

2015

510 N. Santa Fe, El Paso Museum of History - DOWNTOWN

*Clear float glass with airbrushed vitreous enamels and hand blown glass / 9' x 28'*

**About the work:** Southwest geologic sites inspired the design. The concept of time, reflecting elements from the past, present and future are symbolically represented in the upward abstract gesture, as it expands into infinity. This sweeping form is also meant to mirror elements in the building design and complement its angular structure. Through abstract expression, the artwork ignites the viewer's imagination and emotions, as they visit the El Paso Museum of History.



## A Novel Romance

### Ho Baron

2006

501 N. Oregon, El Paso Main Public Library - DOWNTOWN

*Bronze sculpture / 6' x 12'*

**About the work:** A Novel Romance, by sculptor Ho Baron, adorns the outside of the main public library in downtown El Paso. The title is a takeoff on the popular genre of romance novels. The surrealistic bronze is whimsical and portrays dancers posed on a base of hundreds of tiny faces gazing up at them.







## Reclaimed Crossing

Bruce Taylor

2013

451 N. El Paso St., Bataan Crossing - DOWNTOWN  
*Steel, found objects / 6' x 48'*

**About the work:** The work relies heavily upon the use of recycled/reclaimed stainless steel and is intended to illustrate the local topography and the community. The basis of the design is centered on an abstracted view of El Paso as if seen from either an airplane or a satellite.



## Ferrocarriero

Art Garcia

2013

457 N. Campbell St., Bataan Crossing - DOWNTOWN  
*Steel, paint / 6' x 48'*

**About the work:** Garcia's design for Campbell St. is influenced by the rich history of the Bataan Rail Road, commemorating those behind the building of the railway—from the workers, to the civil leaders—paying tribute to those faces that are often overlooked. The design consists of a time-line description and profile that gives the illusion of a train ride when walking by the fence.



# Sombras y Luz

Bill & Mary Buchen

2013

510 N. Santa Fe St. - DOWNTOWN

*Papel-Picado (three fences): Steel with powder coated paint*

*Reading Circle Shade Canopies and seating: Stainless steel and glass, porcelain tiles, and lighting. For drums: Steel and paint/varies*

**About the work:** Sombras y Luz includes powder-coated steel fences depicting “papel picado” or paper cut-outs, a traditional and local cultural craft. The fence design illustrates the historical icons, native plants and flora unique to the El Paso.





## Los Lagartos

Luis Jimenez

1995

111 E. Mills St., San Jacinto Plaza - DOWNTOWN

*Fiberglass sculpture / 10' x 12' x 10'*

**About the work:** Los Lagartos (The Alligators), is a playful sculpture paying homage to the live alligators that were once kept in a specially gated artificial lagoon in the middle of San Jacinto Plaza. Moved to the El Paso Zoo in the late 1950s, the alligators were a favorite among many El Pasoans, including the young Jimenez who often visited on Saturday afternoons.





## Luminous Landscape

### Tom Orr & Frances Bagley

2013

453 N. Mesa St., Bataan Crossing - DOWNTOWN  
*Steel bars with paint (gold and silver) / 6' x 48'*

**About the work:** Impressed by our beautiful Franklin Mountains, artist team Tom Orr and Frances Bagley were inspired to incorporate the visual landscape into their fence design. Each fence consists of two rows of vertical 1" steel rods spaced differently to create an active visual movement as one drives by the fence.



## Confluencia

### Cynthia Patterson & Hank Saxe

2009

601 S. Santa Fe - DOWNTOWN  
*Dichroic glass, steel, concrete / 27' x 6'*

**About the work:** Confluencia at the Downtown Transit Terminal comments on El Paso's unique position as a transit hub and passageway between Mexico and the United States. Combining arc-shaped steel columns and cross braces with an infill of curvilinear metal and glass elements, this abstract sculpture makes metaphoric references to the El Paso sun, river, and mountain valley.







## Points of Light

### Creative Kids

2015

Pedestrian Pathways - DOWNTOWN

*Steel and LED lighting/ (3) 6' x 6'*

**About the work:** Located underneath the Durango Bridge, three six-foot diameter steel piñatas hang from the bridge decking, weaving Mexican culture with color theory and imagery. The three piñatas evoke a spirit of festivity in the Durango Bridge underpass space marking the boundary of the Union Plaza Entertainment District. Each pointed cone is lighted from the inside and marked with cutout shapes, projecting light onto adjacent surfaces.



## Reflections of the Desert

### Creative Kids

2015

Pedestrian Pathways - DOWNTOWN

ACRYLIC PAINT ON POLYTAB FABRIC / (4) 14' X HEIGHT VARIES

**About the work:** This mural reveals the strength, symbolizing El Paso and Juarez celebration and rich culture that is the essence of the Borderland. A woman looks beyond the horizon, toward the future with determination. Piñatas showcase some of El Paso's hallmarks: the star on the mountain, the beautiful desert landscape and spectacular sunsets.

# Chroma Booster

Matthew Geller

2015

Pedestrian Pathways - DOWNTOWN

*Steel columns, LED light, and mist / 53' tall*

**About the work:** Chroma Booster creates an interactive visual and sensory experience for the Pedestrian Pathway project. A cluster of colored pipes release mist clouds at random intervals during the day. In the evening, LED lighting causes the clouds to glow with vibrant colors. Users may enjoy activating the water feature: at the push of a button, water briefly gushes from different water spouts at several locations throughout the sculpture's perimeter.





## MaStair Plan

Jari 'Werc' Alvarez

2014

801 Texas Ave.- City Development Center - DOWNTOWN

*1/2" Tempered glass with ceramic frit painted work / 8' x 6' panels*

**About the work:** MaStair Plan is inspired by Axis Mundi, a body of work created with the intention of depicting the moment when one accesses higher consciousness. MaStair Plan comes from the same state of being, ascending and descending the stairs is a metaphor of consciousness. It reveals the strata of planning, and the levels of development when reaching a higher perspective. It is a wordplay on the Master Plan, and it represents looking into the future, while acknowledging the past in the present.





# Leaves of Wind

Catherine Widgery

2014

Mesa St. Corridor - DOWNTOWN

*Aluminum bars, paint / 4' x 5' panels*

**About the work:** Leaves of Wind engages our perceptions of the physical world around us, displaying images of local flora that only resolve to the viewer's eye as they move past. The stations become welcoming environments, filled with light and color, attracting not just the current users of the RTS system but also others who might never have taken the bus.



# El Paso Port-All

## Jari “WERC” Alvarez

2012

1001 S. Stanton St. - CENTRAL

*Sensi-tile, mosaic, acrylic paint, aerosol / 90' x 10'*

**About the work:** The themes and concepts presented in the work invoke the idea of art transforming, inspiring, healing, weaving, and empowering communities. The work represents new and old icons in new ways giving the viewer multiple experiences. The Stanton Port of Entry is one out of three area bridges that connect the United States- Mexico border of El Paso TX and Cd. Juarez, representing a bi-national and bi-cultural relationship with the neighboring city of Cd. Juarez.







## Men of Company E Memorial

Julio Sanchez de Alba

2008

4321 Delta Dr. - CENTRAL

*Bronze bas relief, concrete, granite / 8' x 14'*

**About the work:** The Men of Company E Memorial is a bronze bas relief monument honoring a group of young Mexican-American Soldiers from the City of El Paso who were sent to Southern Italy on a tragic mission to cross the Rapido River on the night of January 21, 1944.





## Concourse B Variations

Rae Mahaffey

2010

6701 Convair Rd., El Paso International Airport - CENTRAL

*Tile, steel, stained concrete / varies*

**About the work:** Derived from the Indian motifs already in use in the historic, original sections of the El Paso International Airport, the artist designed 45 glass panels, suspended from the ceiling, to welcome travelers to the City of El Paso.





## Pursuit-Harris Hawk

Heath Satow

2012

4001 E. Paisano, El Paso Zoo - CENTRAL

*Stainless steel with ferric oxide patina, Cor-ten steel / 21' x 10'*

**About the work:** The primary goal of this iconic sculpture is to attract the attention of the public as they walk into the area designated for the Chihuahuan Desert Bird Prey exhibit. The stainless steel hawk sculpture has a ferric oxide patina, along with the Cor-ten steel tree sculpture's rust finish.





# History of Five Points

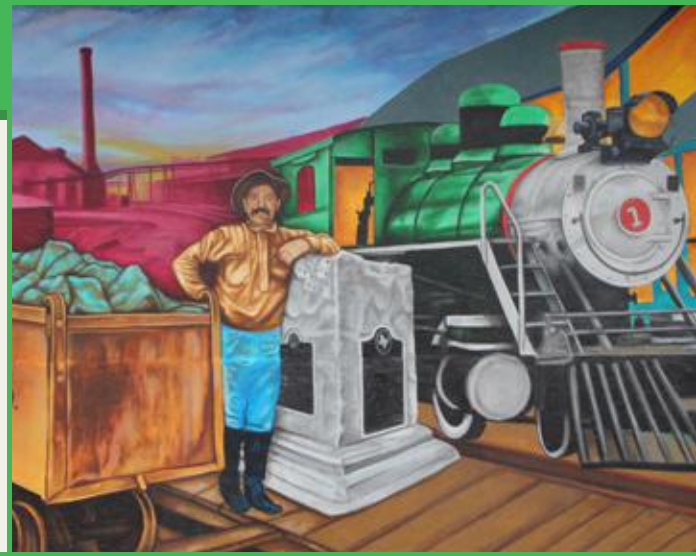
## Jesus “Cimi” Alvarado

2013

911 N. Raynor St. - CENTRAL

*Acrylic paint on unwoven cured fabric / (4) 8' x 12' panels*

**About the work:** The murals at the Police Headquarters aim to communicate to the viewer the colorful history of the Five Points area of El Paso, and in doing so reflect the architecture, character, and local environment. The design moves chronologically from left to right, detailing on each panel the successes our community leaders of each period left for us to enjoy.







## Regeneration

### Mitsu Overstreet

2008

200 Raynolds St. - CENTRAL

*Paint over concrete / 90' x 8'*

**About the work:** Mitsu Overstreet's *Regeneration* is a look at the elements involved in natural and faith healing in traditional Mexican and Indigenous cultures. The artwork is a convergence of imagination, movement and whimsy into a dynamic asymmetrical piece that is intended to evoke reflection by the viewer.



# Blooming Trees & Color Schemes

Cesar Ivan

2010

701 Montana Ave., Pat O'Rourke Recreation Center - CENTRAL  
*Tile, steel, stained concrete / varies*

**About the work:** Blooming Trees & Color Schemes consists of 4 sculptural trees, featuring integrated color in the staining of concrete and surface tile work applied to custom designed tables and stools. The artist incorporated the work, making the space one of fun, relaxation, and reflection.





## Sky Boulder

Willie Ray Parish

2009

2606 Harrison Ave - CENTRAL

*Concrete, granite, steel / 14' x 6'*

**About the work:** Transforming what was once a drainage dam into a sculptural landscape, Sky Boulder serves as a metaphor for the tenuous state of the earth as it hangs in an environmental balance. As the largest and most dramatic sculpture in the park, it serves as a magnet for visitors onto the site.





# Glory Road Transit Terminal

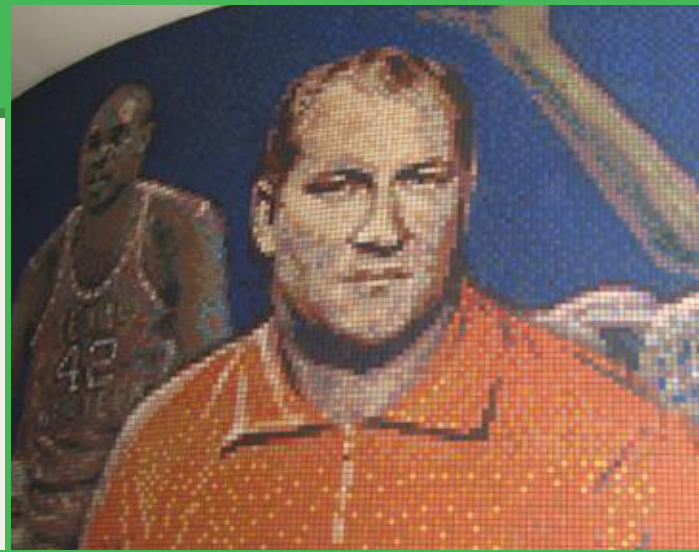
Mike Mandel

2010

100 E. Glory Rd. - CENTRAL

*Porcelain and glass mosaic tiles / 16' x 18'*

**About the work:** In recognition of a historical moment in NCAA College Basketball, the public art piece commemorates Coach Don Haskins and the all-African-American line-up in the title championship game of 1966.



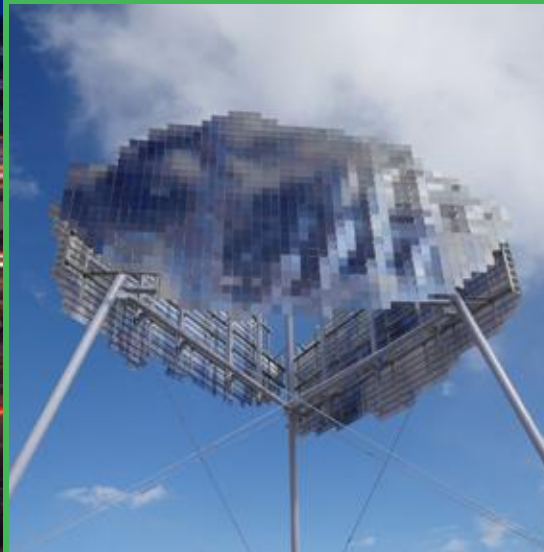
## Cloud

Donald Lipski

2015

Spur 1966 Roundabout, Schuster Ave. - CENTRAL  
*Sheet Metal, Steel / 60'x48'*

**About the work:** Cloud, at the Spur 1966 roundabout, speaks to all passing through. Inspired by the hallmark of Bhutanese architecture prominently displayed at the University of Texas at El Paso (UTEP), the artwork is an abstract gesture representing Bhutan – known as the Kingdom in the Clouds – and the City of El Paso's spectacular cloud formations. The piece stands 60 feet tall, from base to crest, serving as an icon for the City of El Paso and UTEP.





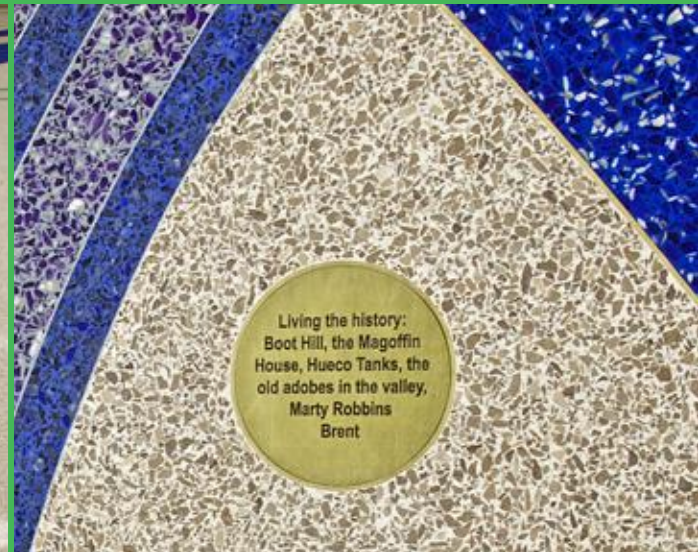
# River Spirit

## Mitsu Overstreet

2013

6701 Convair Rd., El Paso International Airport - CENTRAL  
Terrazzo / 10,320 sq. ft.

**About the work:** Inspired by the Rio Grande River, artist Mitsu Overstreet designed River Spirit to be an interactive design that spans the entire baggage claim area with imagery iconic to the border region. It includes engraved personal quotes about El Paso by local residents embedded into the terrazzo floor.



Living the history:  
Boot Hill, the Magoffin  
House, Hueco Tanks, the  
old adobes in the valley,  
Marty Robbins  
Brent



Roger Stoller

2016

El Paso Zoo Event Tent Area - CENTRAL

*Brushed stainless steel / 19' 3" x 14'*

**About the work:** The nobility & magnificence of these creatures are the inspiration for this piece. Some veiled, others substantial in presence. The effect is intended to leave open spaces, to be completed in the mind of the viewer. Principles that underlie natural phenomena combine with serendipity and intuition, allowing me to maintain a balance between control and spontaneity in my work. The marvels of creation fill me with reverence and wonder; these are the energies that inspire me to create.



# Ocotillo

Howard Kalish

2011

12274 Pebble Hills Blvd., traffic circle - EAST  
*Steel, translucent urethane, LED lights / 14' x 16'*

**About the work:** The sculpture is inspired by the ocotillo plants around our desert region. The artwork located in the roundabout is an interpretation which takes the plant as a starting point, and acts as a kind of homage to the foliage of the area.



# Pasajeros

Simon Donovan & Ben Olmstead

2015

10151 Montana, Bicentennial Council Transit Operations Center  
- EAST

*Painted Steel / 25' x 23'*

**About the work:** The intent of Pasajeros was to create a contemporary, monumental and whimsical work that communicates the theme of bus transportation. Simplified human forms derived from transportation signs are put into the context of boarding a bus to achieve Sun Metro's purpose of encouraging ridership. Super-sizing the elements and giving the normally two-dimensional figures a three-dimensional depth gives them a playful element.





# Radiance

Shane Allbritton and Norman Lee

2016

El Paso International Airport, 6900 Commerce Ave. - CENTRAL

*Painted steel, steel ball chain, and dichroic acrylic/ 20'x36'*

**About the work:** This piece features acrylic shapes suspended from the ceiling from a painted steel structure. The colored shapes are drawn from traditional patterns related to the various groups that have contributed to the rich and diverse cultural heritage of El Paso. As the light filters from above the piece, vibrant patterns and colors will reflect onto the buildings surface.





## The River / El Rio: Both Sides, No Sides

### Mitsu Overstreet

2016

El Paso International Airport, 6900 Commerce Ave. - CENTRAL Terrazzo , Lithocrete / 4,000 sq. ft.

**About the work:** The artwork for the El Paso International Airport Consolidated Rental Agency Complex flows naturally through the core atrium floor space, swaying into a covered exterior walkway and transitioning to the existing terrazzo floor artwork in the baggage claim area. The artwork creates a meaningful coherent transition between the two architectural spaces communicating to all that have arrived to El Paso. The artwork incorporates into the piece evocative poetry that moves throughout the piece.





# Nebula

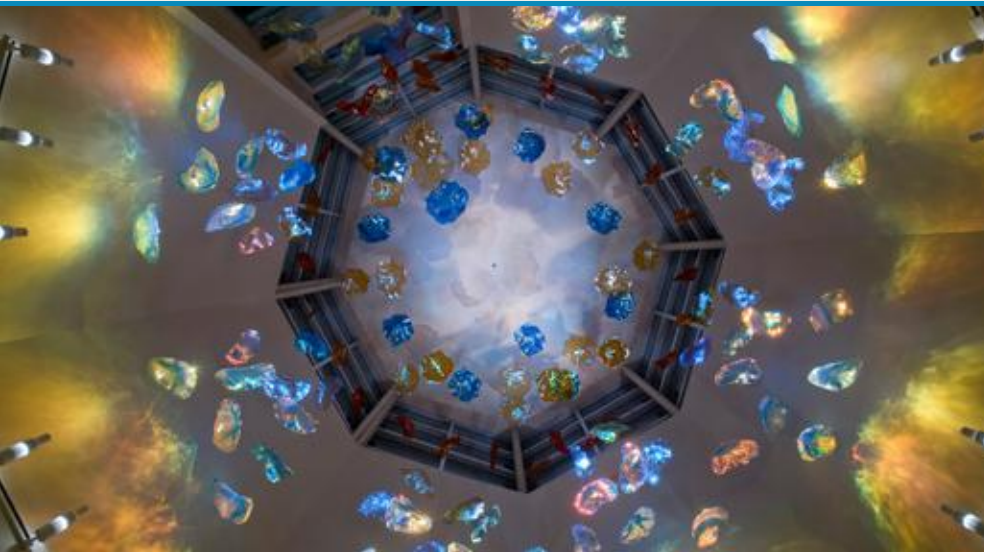
Michele Gutlove

2016

Irving Schwatz Library, 1865 Dean Martin Dr. - EAST

*Hand molded glass, stainless steel cable and LED lighting / 14'x20'*

**About the work:** Inspired by The Helix Nebula, one of the nearest nebulae to Earth (650 light years away), Nebula is composed in such a way that natural sunlight will cause blue caustic reflections. The placement of glass will reflect both the high Summer Solstice sun and the lower Winter Solstice sun. Additionally, yellow reflections will result from wall-mounted LED lights. These reflections will completely surround the space, without gaps, and without impeding access for maintenance.





# Ken Bernstein

2009

610 N. Yarbrough - LOWER VALLEY

Concrete, granite, steel / 30' x 18' x 18'

**About the work:** Remembrance-Crime Victims Memorial is dedicated to those who have died through acts of violence. The sculptural pavilion consists of a steel roof structure that has the appearance of an abstract wing that offers a sense of transformation and of taking flight. Four eight foot diameter polished black granite discs hold the engraved names of those who have died.





# Natural Passage

## Garry Price

2010

9051 Alameda Ave. - LOWER VALLEY

*Ceramic tile / 24' x 4'*

**About the work:** Inspired by the historical nature of the area where the Mission Valley Terminal now sits, artist Garry Price custom designed a ceramic mural paying homage to the iconic architecture, plants, and animals of the Lower Valley of El Paso.





## Firebird

Greg Reiche

2014

400 Revere St., Fire Station No. 5 - LOWER VALLEY

*Corten Steel, kinetic dichroic and iridized glass elements / 20' tall*

**About the work:** Firebird was designed to be engaging and dynamic. Constructed with more than two tons of steel and over 1000 individual pieces of kinetic glass, the sculpture is highly sensitive to environmental changes such as light and air movement. Firebird speaks to the heroic nature of the fire station's occupants. Its iconic form evokes feelings of strength, beauty and guardianship. The steel body is finished with a natural, reddish/brown oxide patina, accenting the dark colors within the fire station's architecture. The glass panes are hung and secured within a woven metal mesh. One moment the piece is static, and the next its surface shimmers with light and movement. Much like the fire station, it can randomly erupt with sudden energy.





# Two Mountains

Janet Lofquist

2009

7969 San Paulo Dr. - LOWER VALLEY

*Rammed earth, recycled aluminum cans,  
shredded rubber tires / 50' x 20' x 6'*

**About the work:** Inspired by the Franklin Mountain range, Two Mountains consists of two sculptural elements composed of locally sourced material, and is located in front of the Municipal Services Center. Layered into the striations of pigmented earth are recycled materials that have a significant impact on our environment.



## Rising Stronger

Julio Sánchez De Alba

2016

Fire Station #18, 7901 San Jose Rd. - LOWER VALLEY

*Bronze / 9' tall on a 8' base*

**About the work:** Rising Stronger reflects the pain, sorrow, sacrifice, and determination of Americans, during the 9/11 attacks. The fireman kneeling to pick up a fallen comrade's helmet poignantly transmits these darker emotions, while the sculpture's texture and the rubble beneath, represent the chaos created by this infamous intrusion. The standing fireman, looking up to a safer future, assures us that we will rise stronger.





## Continuum

Patricia “Sabina” Munoz

2010

1300 Hawkins Blvd., José Cisneros Cielo Vista Library  
*Venetian tile / 10' x 10'*

**About the work:** Continuum is a spherical sculpture designed with custom Venetian tile. Inspired by the daily activities which take place at a library, the sculpture is a metaphorical reference to an individual's continued interest in expanding and developing one's knowledge.



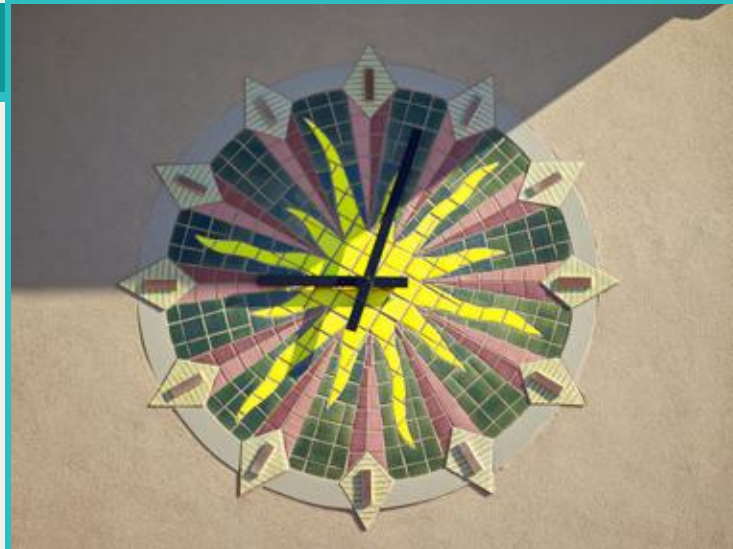
## Time in Transit

Garry Price

2010

7535 Remcon Cir.  
*Ceramic tile / (2) 8' diameter*

**About the work:** Inspired by El Paso's sunshine and the Sun Metro logo, artist Garry Price custom designed the two ceramic mosaic clocks located at the Westside Transit Terminal.



# Upper Valley Sails

Doug Taylor

2010

5105 Upper Valley Rd., traffic circle

*Stainless steel, high strength polymer/fabric, aluminum / 30' tall*

**About the work:** Upper Valley Sails is a kinetic, wind powered sculpture reminiscent of cottonwood seeds, ubiquitous in the area, floating translucently against the sky. The sculpture's location and function symbolically recognize the site as a historic trade and travel route, transporting people and goods, commemorating a shared cultural history.





## Days of Valor

### Jimmie Bemont

2014

5301 Salem Dr., Veterans Park

*Bronze sculpture / 4' x 8' x 6'*

**About the work:** Days of Valor is a bronze sculpture which commemorates the heroic deeds of U.S. Veterans of Foreign wars. It details a life-sized, World War II-era soldier with authentic gear. His posture was sculpted to resemble a soldier in the midst of battle; attentive and vigilant, yet apprehensive of surrounding danger. The sculpture's base offers a grim reminder of war's indiscriminant damage, with remnants of ruin and rubble.



# Rivals

## Lars Stanley

5951 Redstone Rim Dr.

*Forged steel with paint / 9' x 8' x 6'*

**About the work:** Rivals consists of two sculptures, a large scorpion and vinegaroon, challenging each other in a competitive stance at the entrance to the park. These native rivals, found in the natural environment of the Chihuahuan Desert of the Southwest, suggest the spirit of competition that embodies the teams that come to the park to play.





# El Paso Public Art Program

The Public Art Program for the City of El Paso was adopted by City Council in 2006 as the effort to integrate public artworks throughout the City of El Paso. The Public Art Ordinance established a 2% for the arts program, setting aside 2% from every Capital Improvement Project budget for the acquisition of art for municipal property. Since its inception, the Public Art Program has strived to offer our local communities and neighborhoods insight, repose, delight and a distinctive sense of place in an effort to achieve the following Public Art Program goals:

- Enhance the quality of life of residents
- Support creative and professional growth of the arts community
- Support economic growth
- Enhance the experience visitors have of El Paso
- Promote authentic images of El Paso as a unique place, community and destination.

The mission of El Paso's public art program is to commission and maintain a diverse collection of public artworks; support the inclusion of public art in private development and infrastructure built by others; promote the community's access to, appreciation of and enjoyment of visual art; and supports the emergence of public art practice in El Paso.

The success of public art has allowed the City of El Paso to enhance local communities and neighborhoods, converting them into visual landmarks and sources of inspiration, education and pride for residents and visitors alike. In the creation of Public Art, we have instilled self-esteem, a better understanding and reflection of our community, and respect for our diverse histories, communities and cultures. Through Public Art, we ultimately define our City of El Paso.

## Museums and Cultural Affairs Department

The mission of the Museums and Cultural Affairs Department (MCAD) is to assist in developing a world-class art community in El Paso, Texas. To accomplish this goal the MCAD has established The Museums Division comprised of the El Paso Museum of Art, the El Paso Museum of Archaeology and the El Paso Museum of History each dedicated to providing exhibitions and educational activities that recognize the region's multi-cultural heritage and contributors. The Cultural Affairs Division implements funding programs, public art programs, cultural tourism initiatives and performing/visual arts events that provide a variety of opportunities to engage in arts and cultural activities that enliven and celebrate the City of El Paso and the region. The Museums and Cultural Affairs Department is committed to the continued development of the City's arts industry, providing quality programs that are representative of the City's diverse cultures; and to maximizing available resources in order to enhance the City's cultural vitality.





